

# Planned Three Stents Strategy PCI for LM trifurcation

Kyusup Lee

Asan Medical Center

# PCI Case

## Brief Case Summary

A 68 year-old male was admitted for the evaluation of effort chest pain and dyspnea on exertion which was started several months ago. He has history of hypertension and ex-smoker.

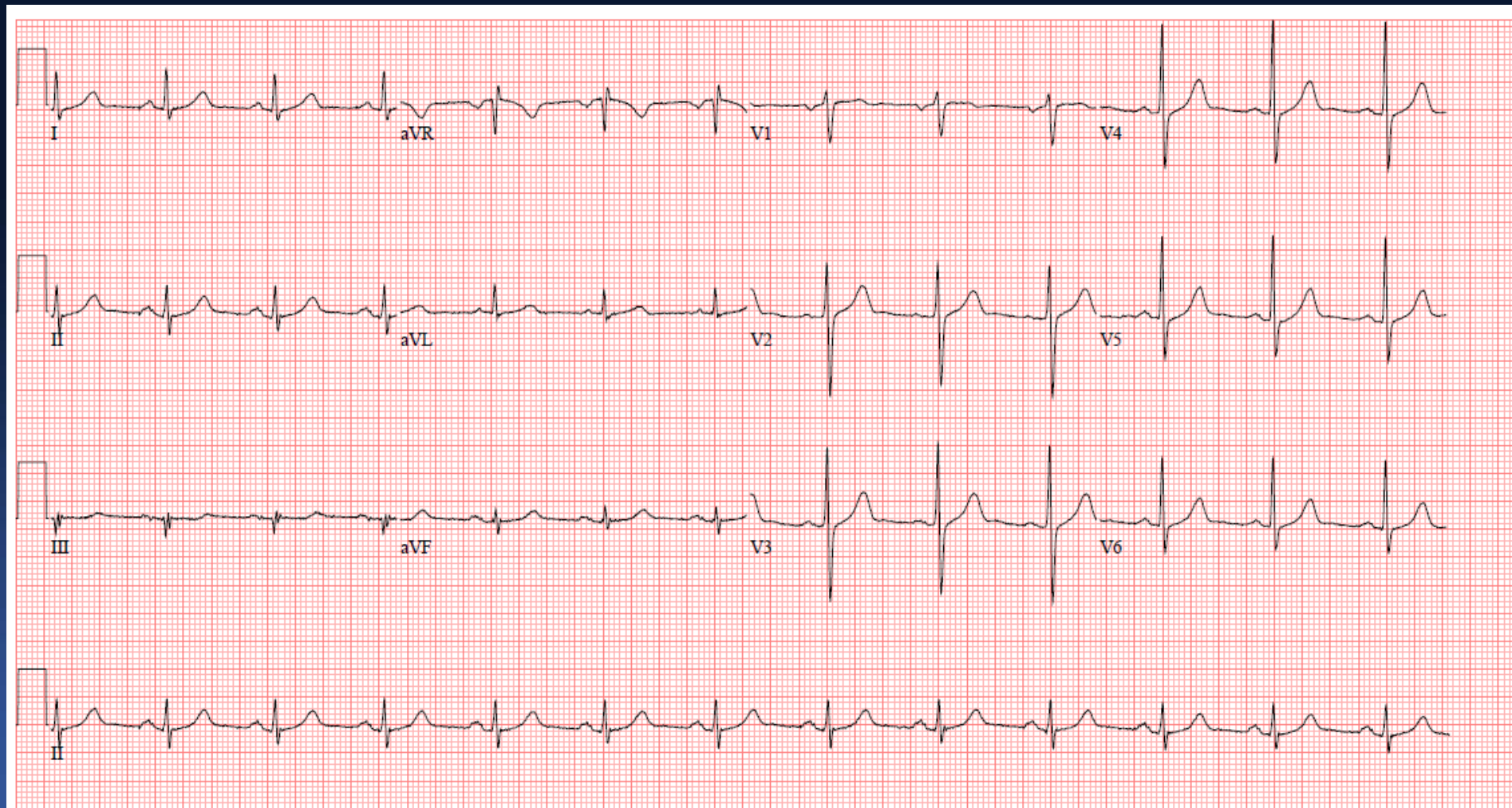
## Past Medical History

- Previous MI : N
- Previous CABG : N
- Previous PCI: N

# Work up

- **EKG : Normal sinus rhythm**
- **Echocardiography : Normal**

# EKG



25mm/s 10mm/mV 150Hz 7.1.1 12SL 241 CID: 0

EID:2 EDT: 14:19 19-JUN-2018 ORDER:

Page 1 of 1

# Chest PA



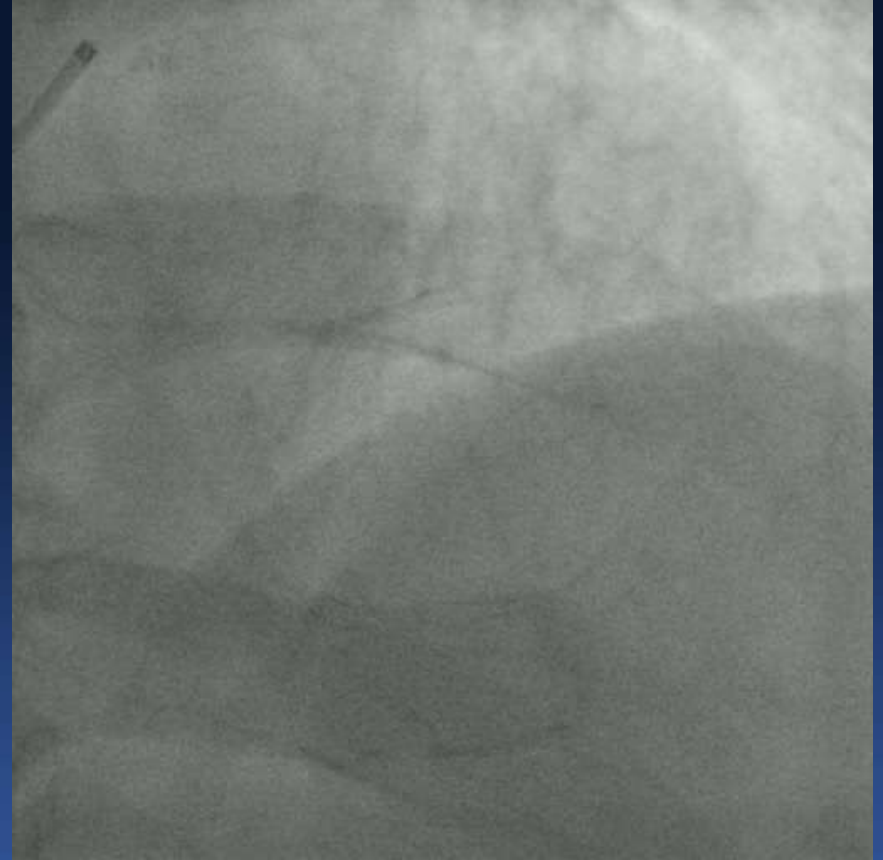
# RCA



# LCA



**AP CAUDAL**



**AP CRANIAL**

# LCA



**SPIDER**



# JL4 8Fr, Femoral



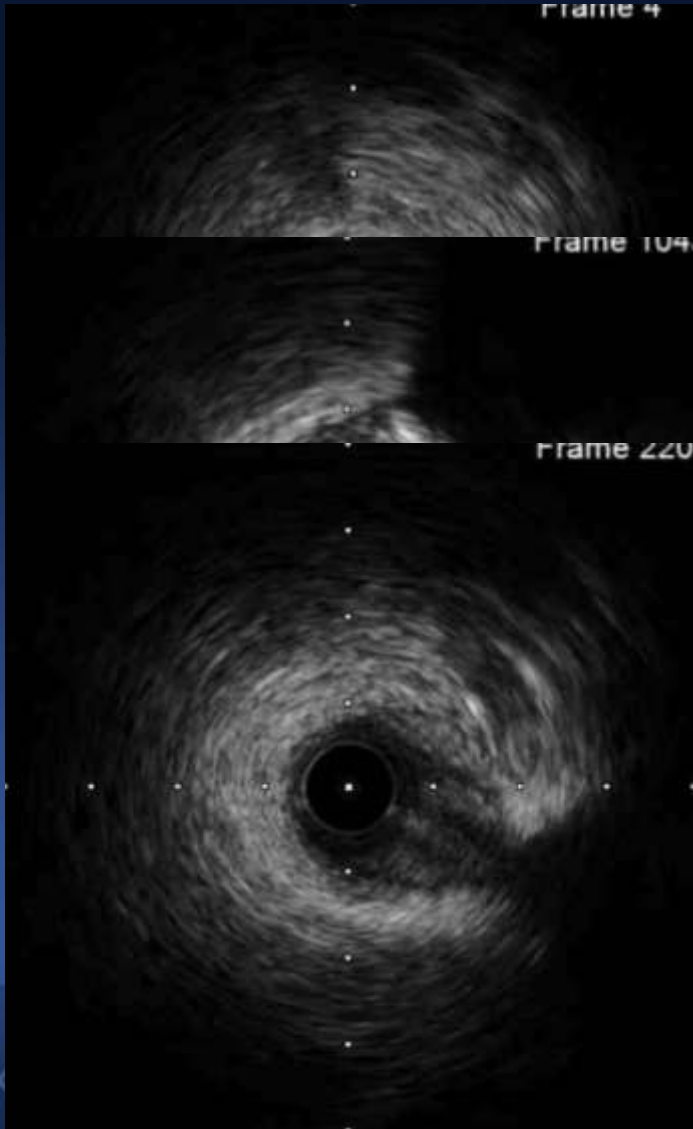
# Pre-Balloon (RI, LCX)



**Compliant balloon 2.5 up to 2.6-2.65 (10-12 atm)**

# IVUS

## Post-Balloon - RI



**Distal Reference Vessel Diameter  
2.0 mm X 2.8 mm**

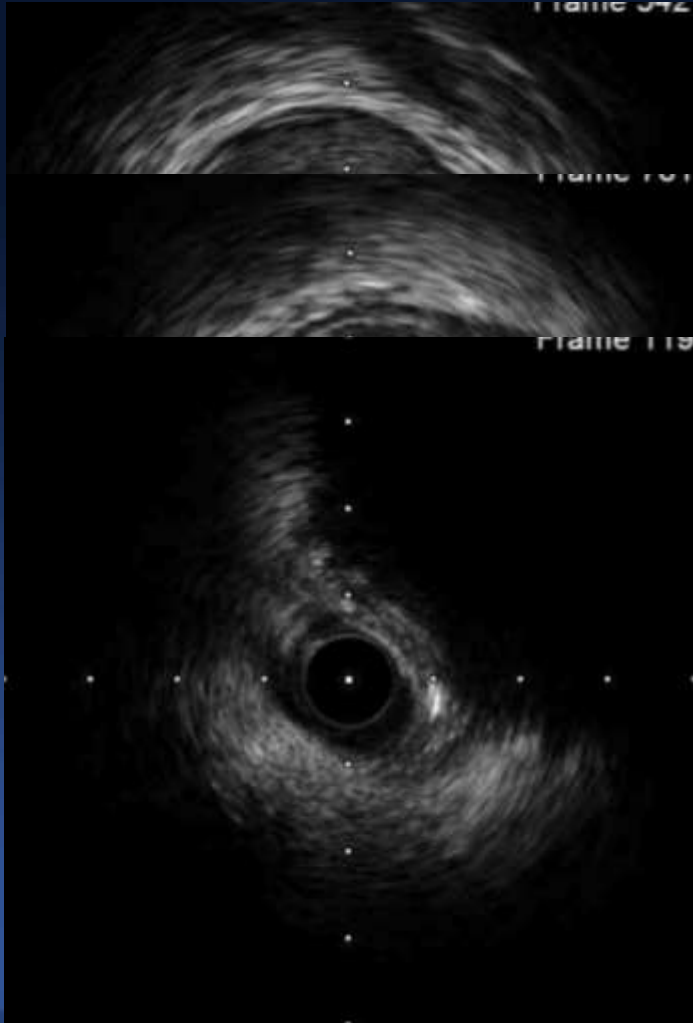
**Balloon dissection**

**Hematoma at Distal RI  
from dissection**



# IVUS

## Post-Balloon - LCX



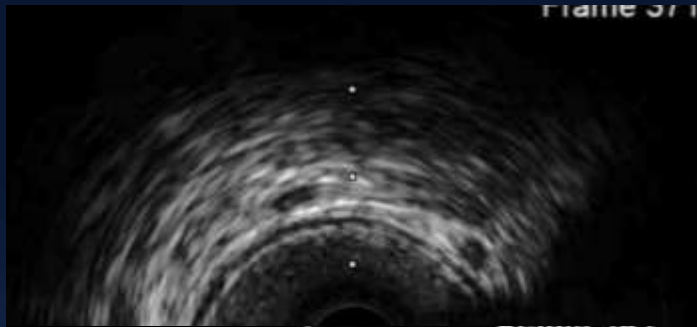
**Distal Vessel Diameter**  
**3.5 mm X 3.75 mm**

**Distal Reference Vessel Diameter**  
**3.0 mm X 3.0 mm**

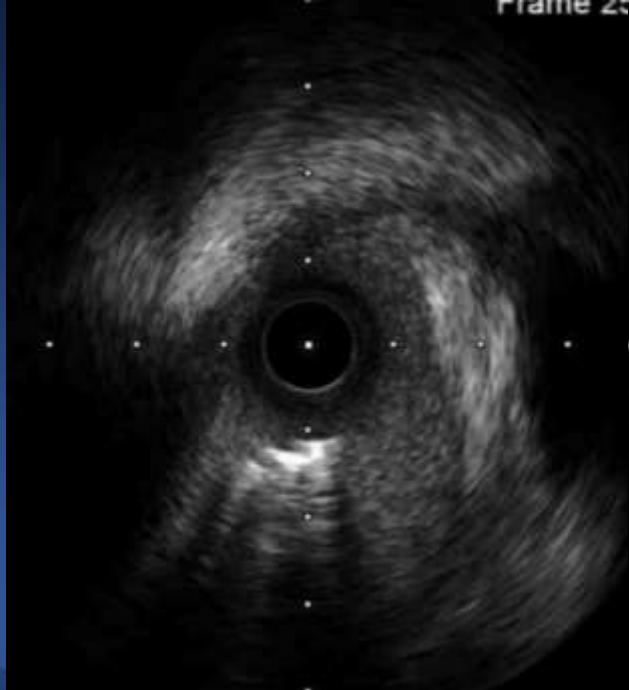
**Minimal Lumen Area**  
**2.4 mm<sup>2</sup>**

# IVUS

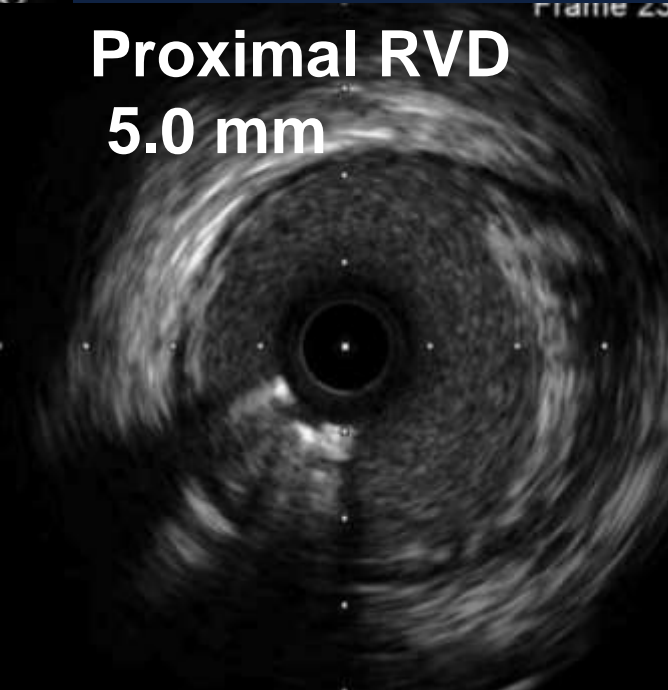
## Post-Balloon - LAD



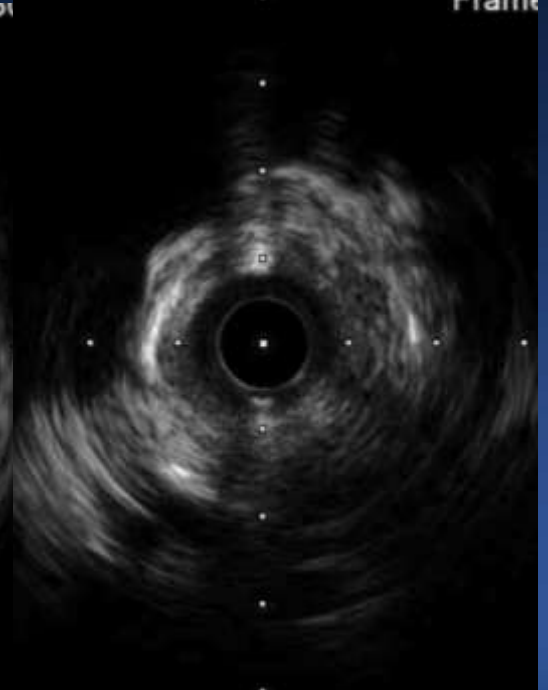
Distal RVD  
4.0 mm



LM ostium

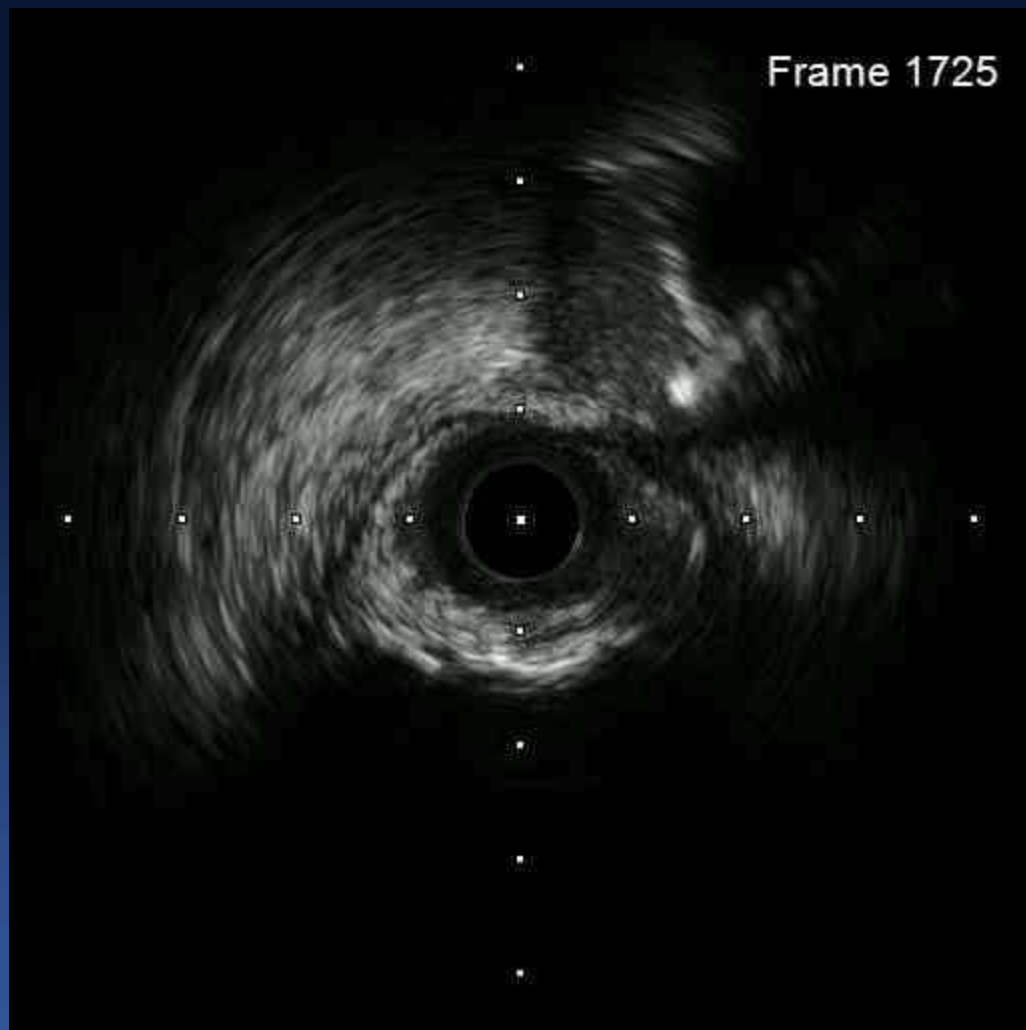


LM shaft



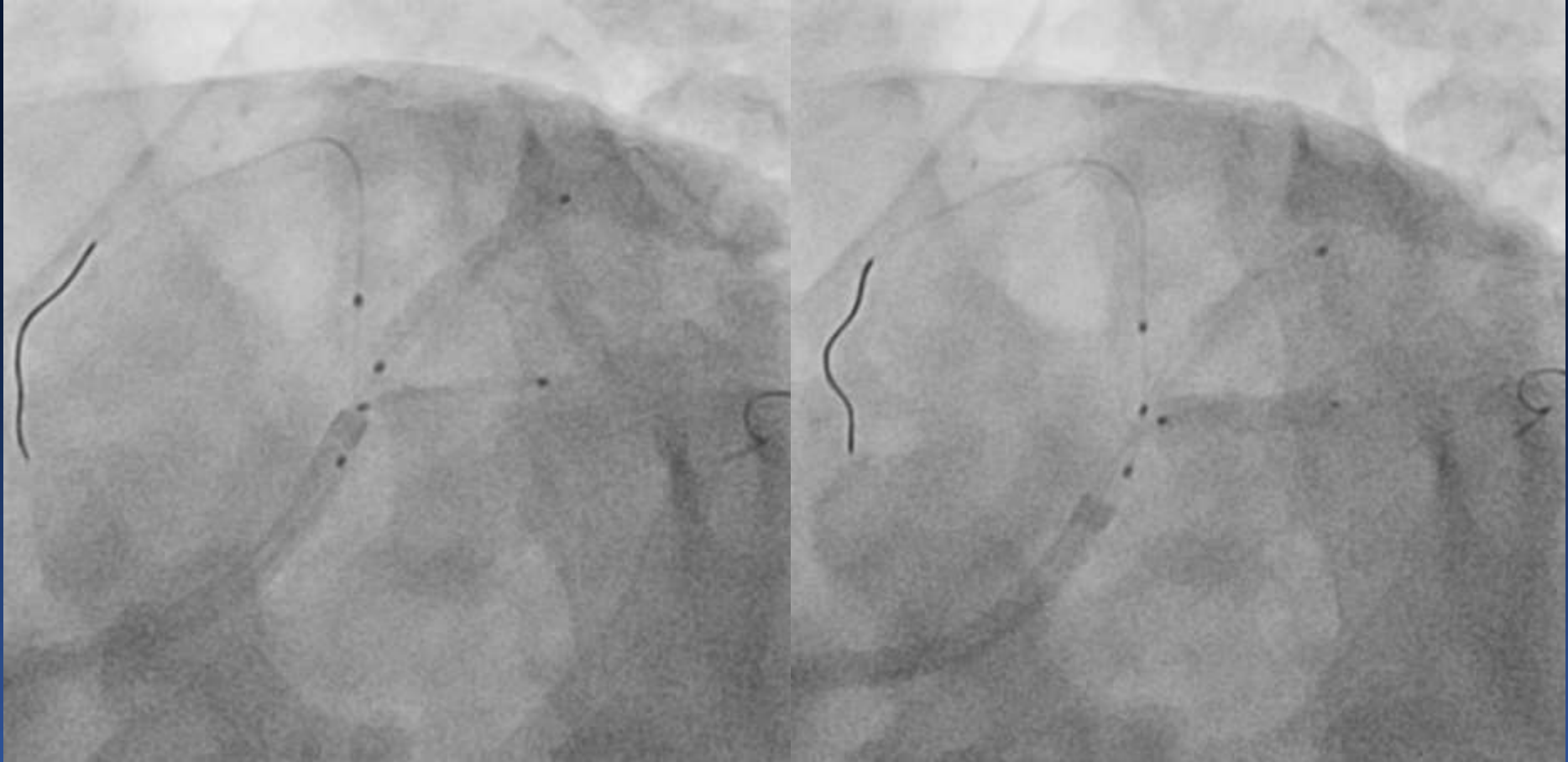
Distal LM

Frame 1725





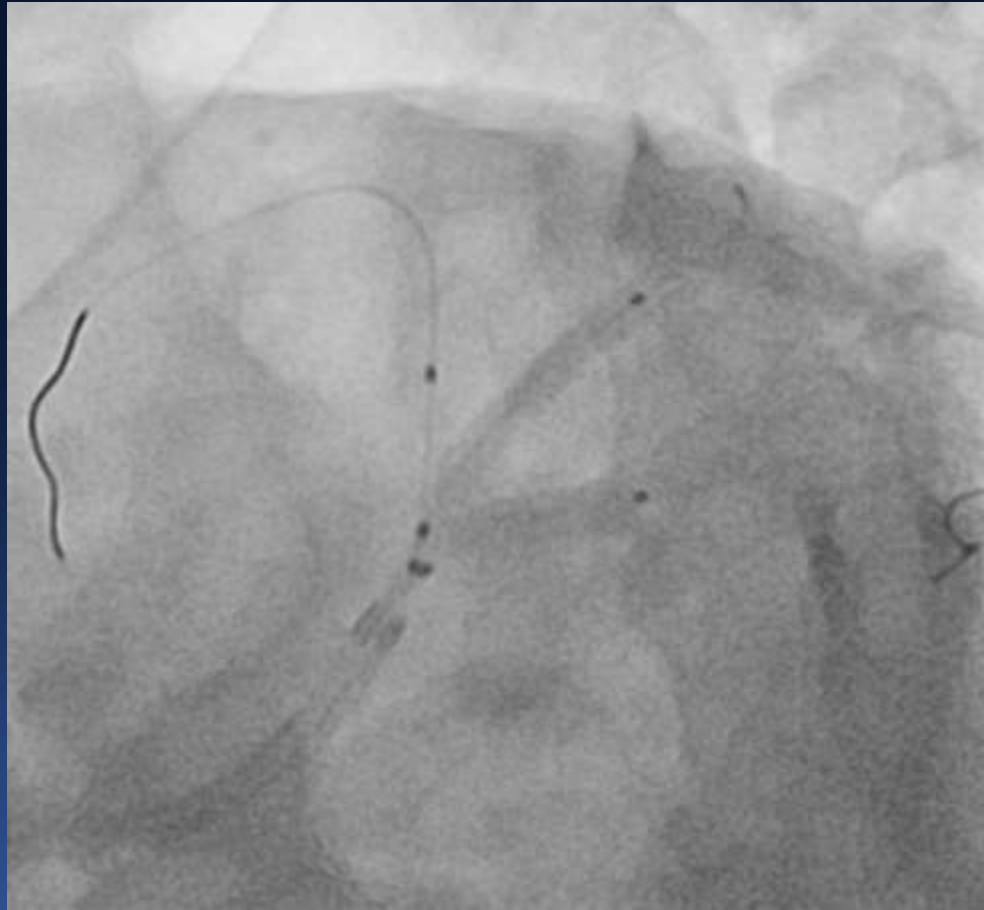
# Side branch stenting



**RI : Xience 2.75 \* 23 mm**

**LCX : Xience 3.0 \* 15 mm**

# Kissing Balloon

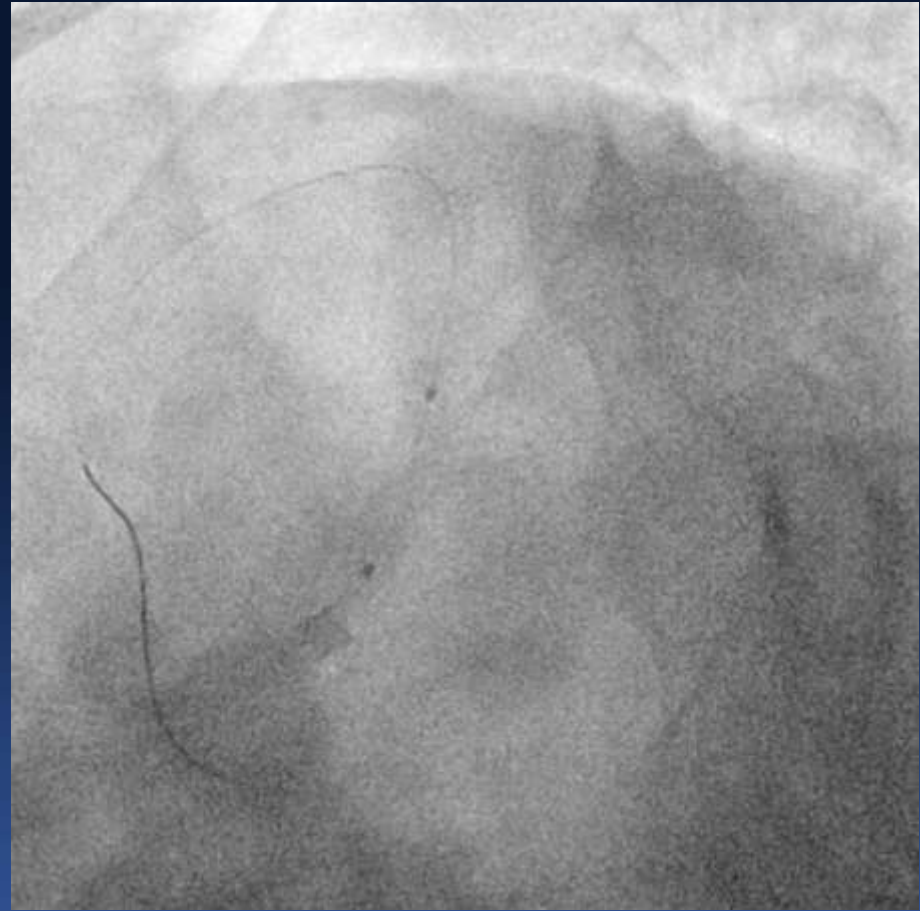


**RI : Stent balloon 2.75 up to 2.75 (10 atm)**

**LCX : Stent balloon 3.0 up to 3.0 (10 atm)**

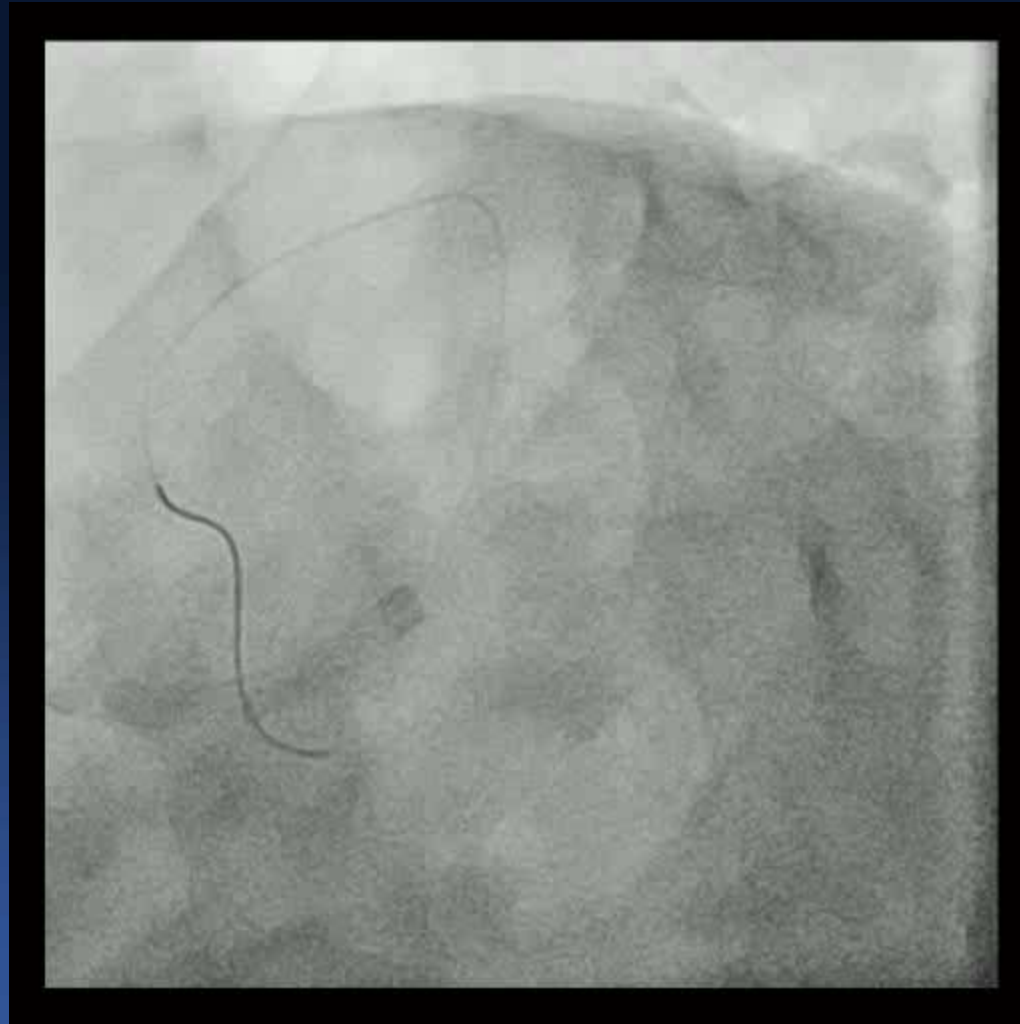


# Balloon Crush Technique

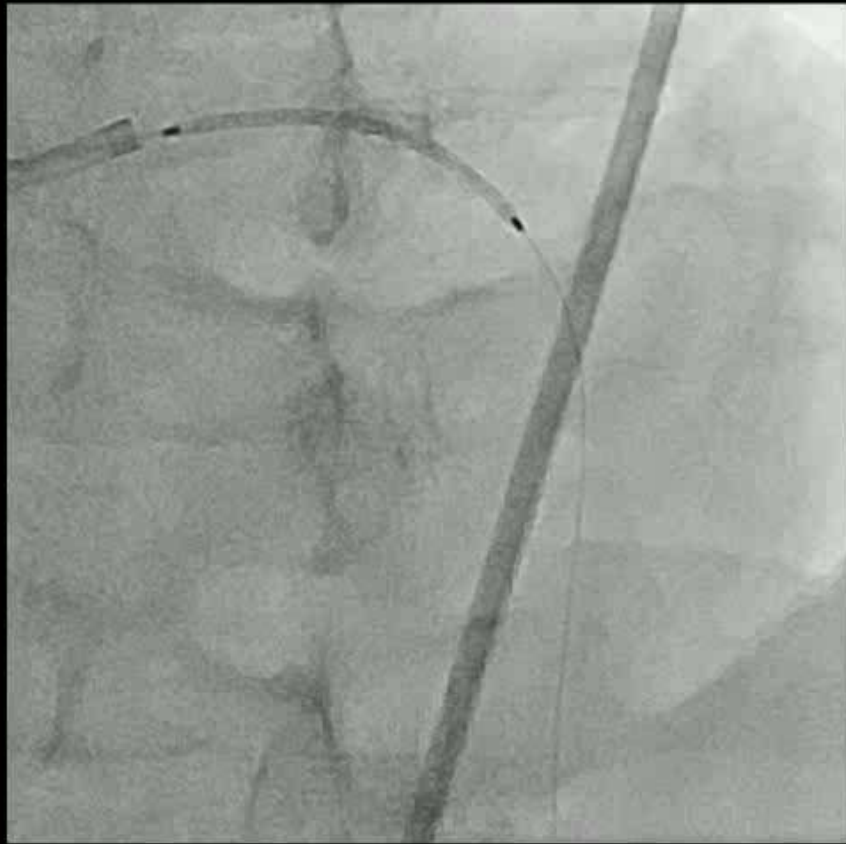


**LM-pLAD : NC balloon 3.5 up to 3.68 (20 atm)**

# Balloon Crush Technique



# LM-pmLAD Stenting



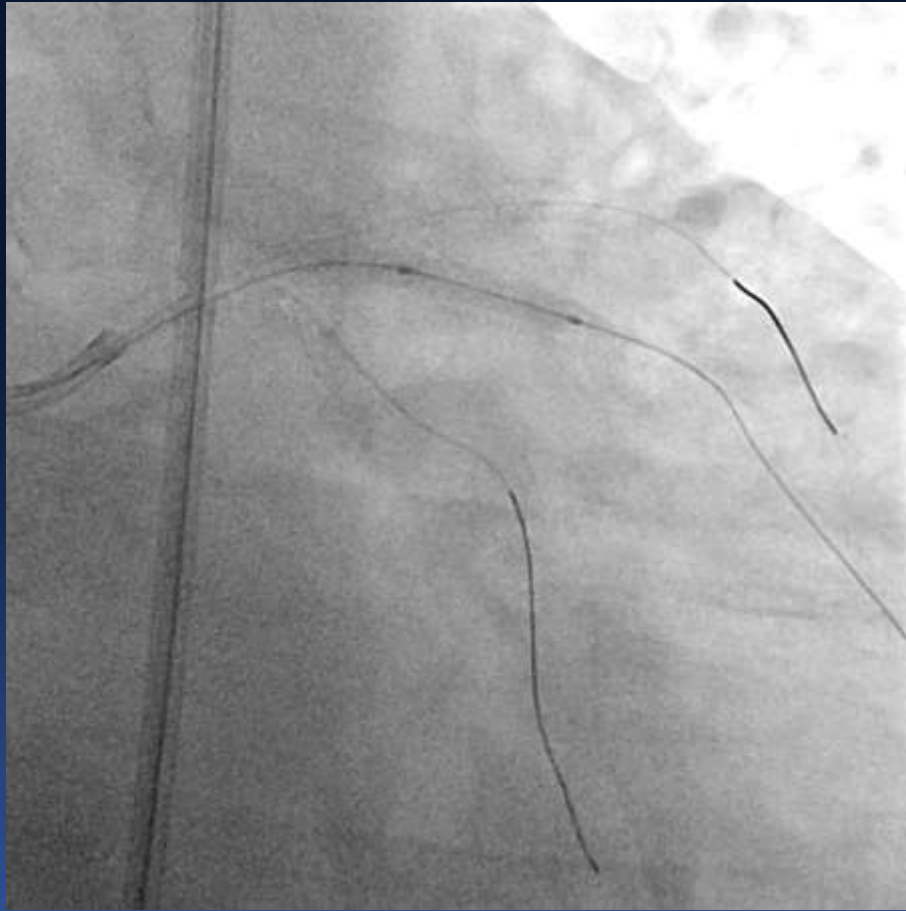
LAO18  
CRAN35

LM-pmLAD : Xience 3.5 \* 38 mm

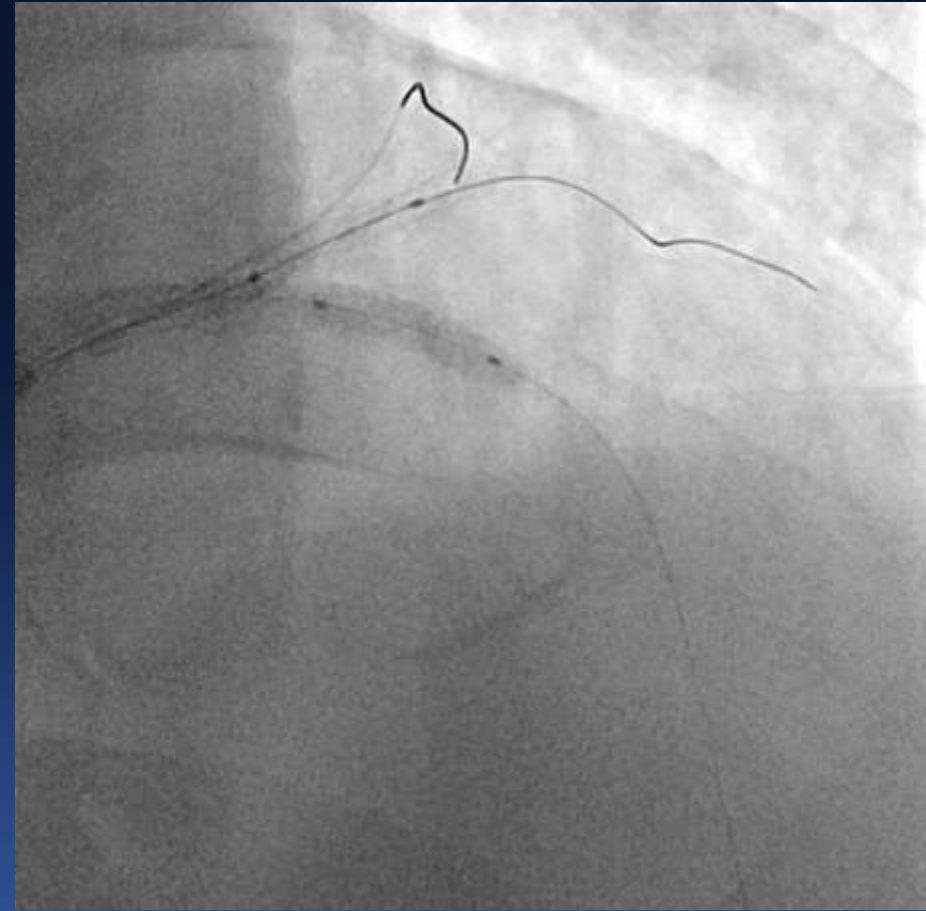
# Post-Stenting



# High-Pressure Balloon (RI, LCX)

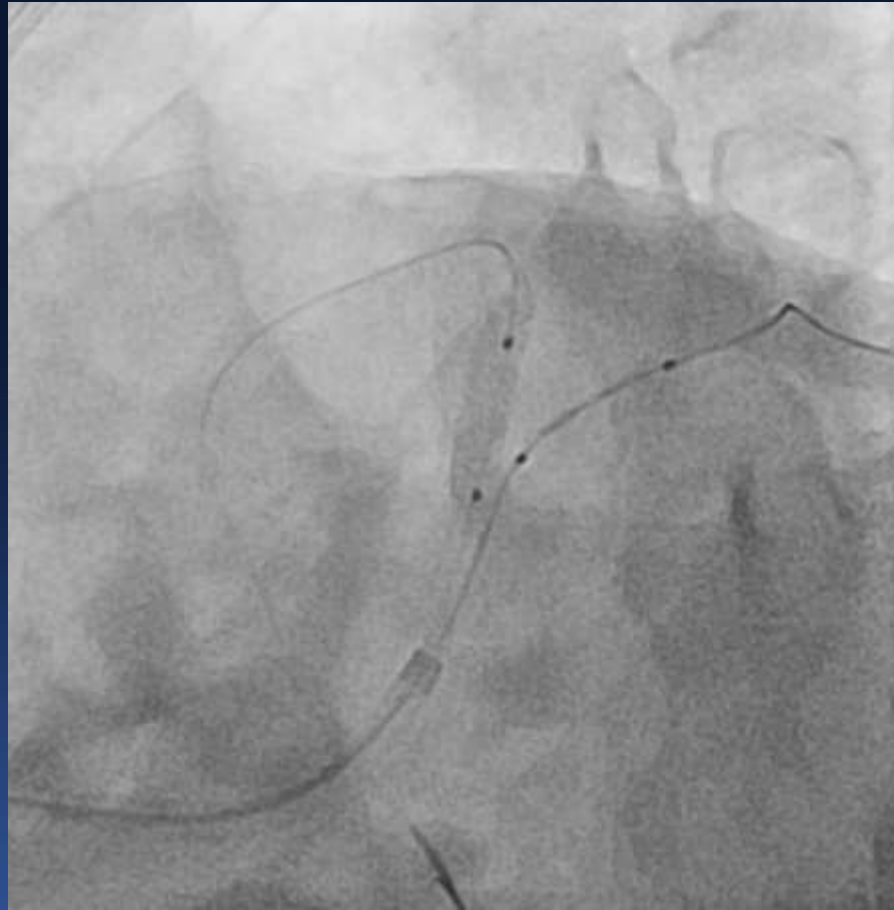


**Compliant balloon**  
2.5 up to 2.86 (18 atm)



**NC balloon**  
2.75 up to 2.9 (16 atm)

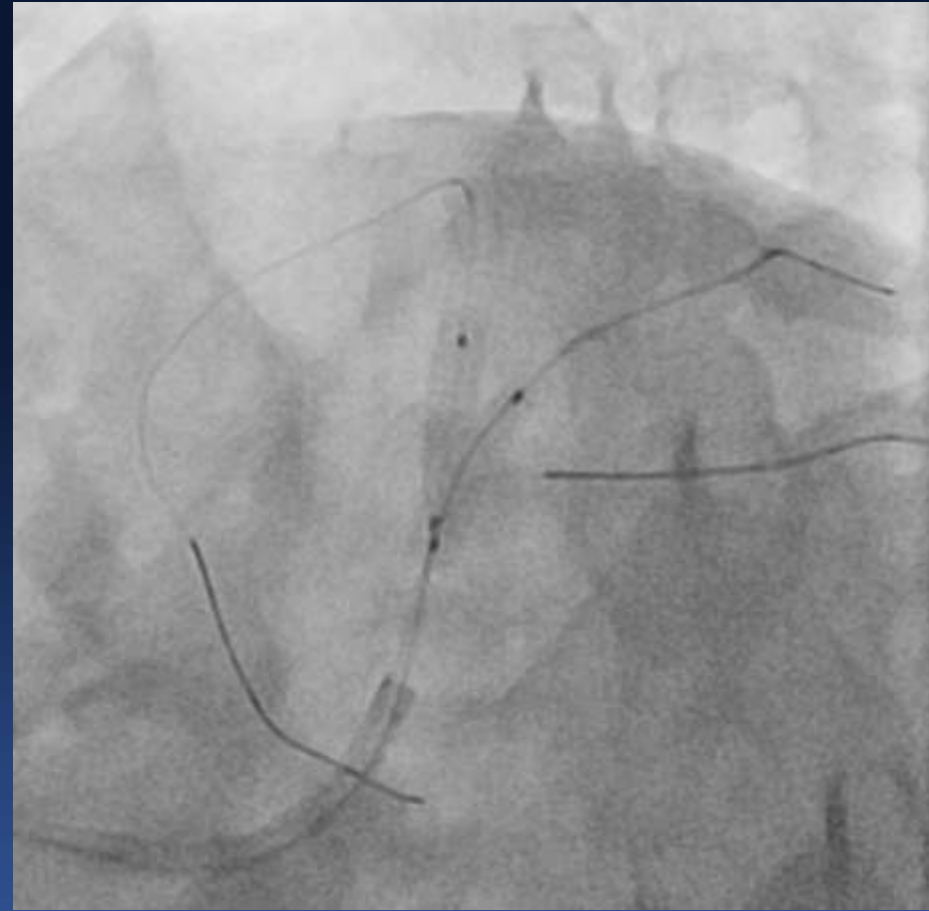
# High-Pressure Balloon (LM-LAD)



**NC balloon**  
**3.5 up to 3.65 (18 atm)**



# Kissing Balloon (LAD & RI)



**LAD : NC balloon 3.5 up to 3.5 (12 atm)**

**RI : NC balloon 2.75 up to 2.75 (12 atm)**

# Kissing Balloon (LM-LAD & LCX)

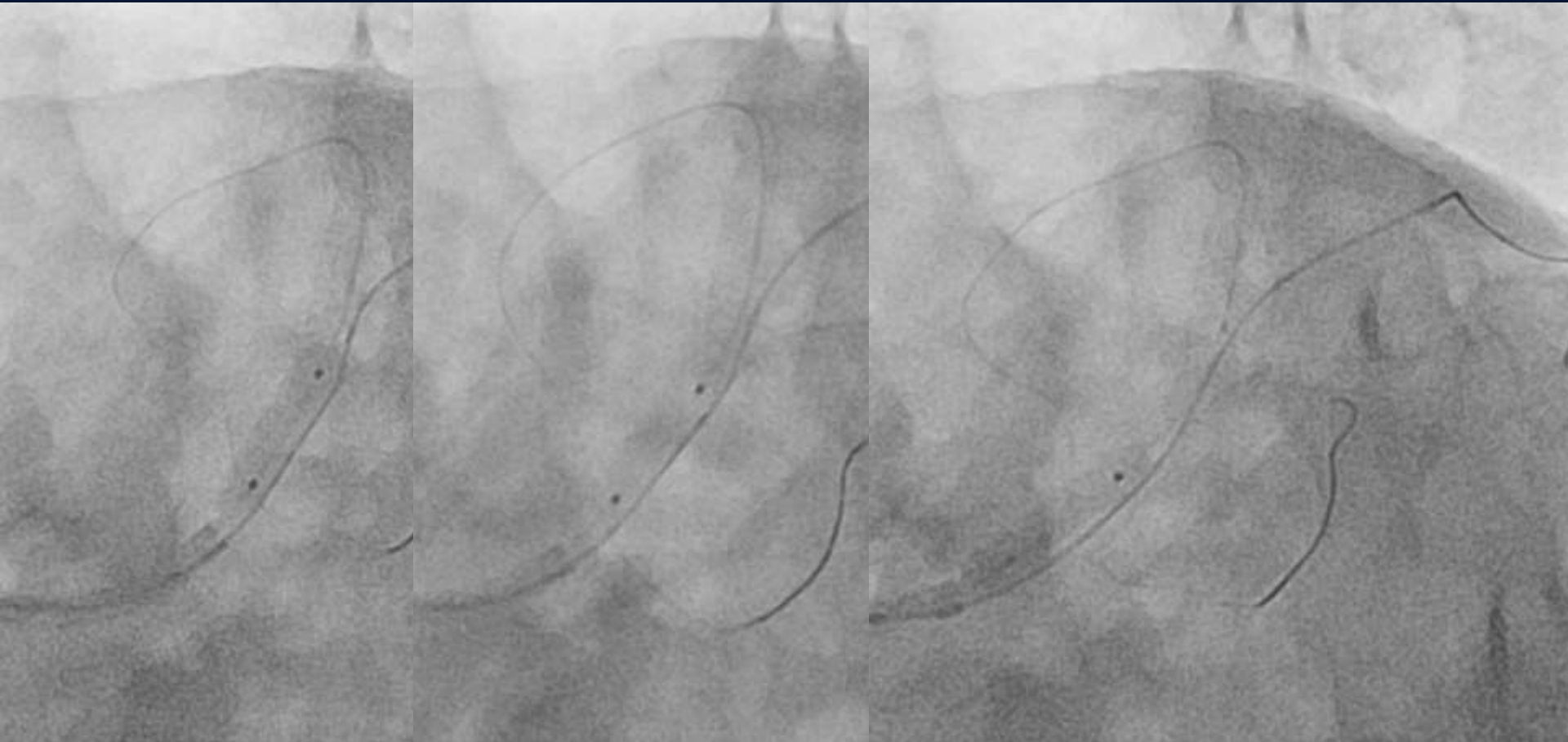


**LM-LAD : NC balloon 3.5 up to 3.5 (12 atm)**

**LCX : NC balloon 2.75 up to 2.75 (12 atm)**

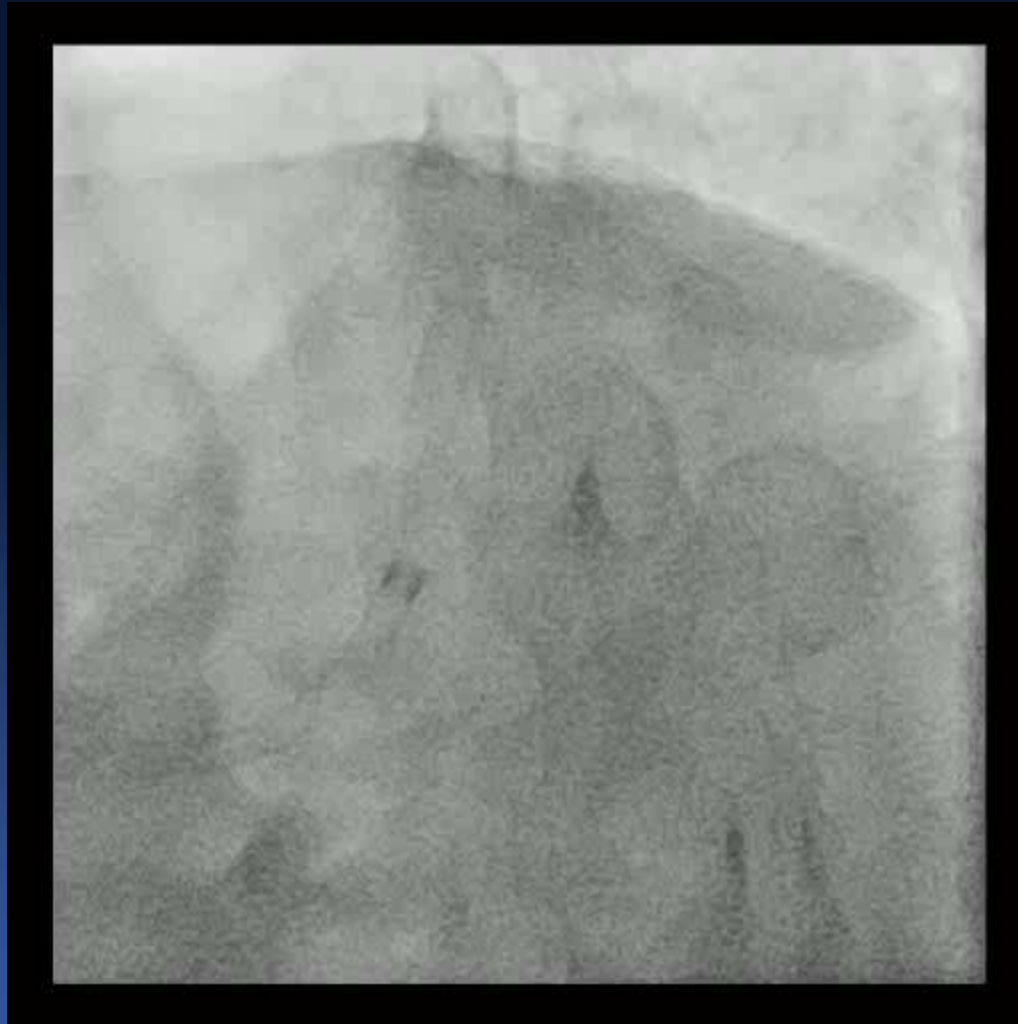


# POT - LM



**NC balloon 4.0 (16-20 atm)**

# Final angiography

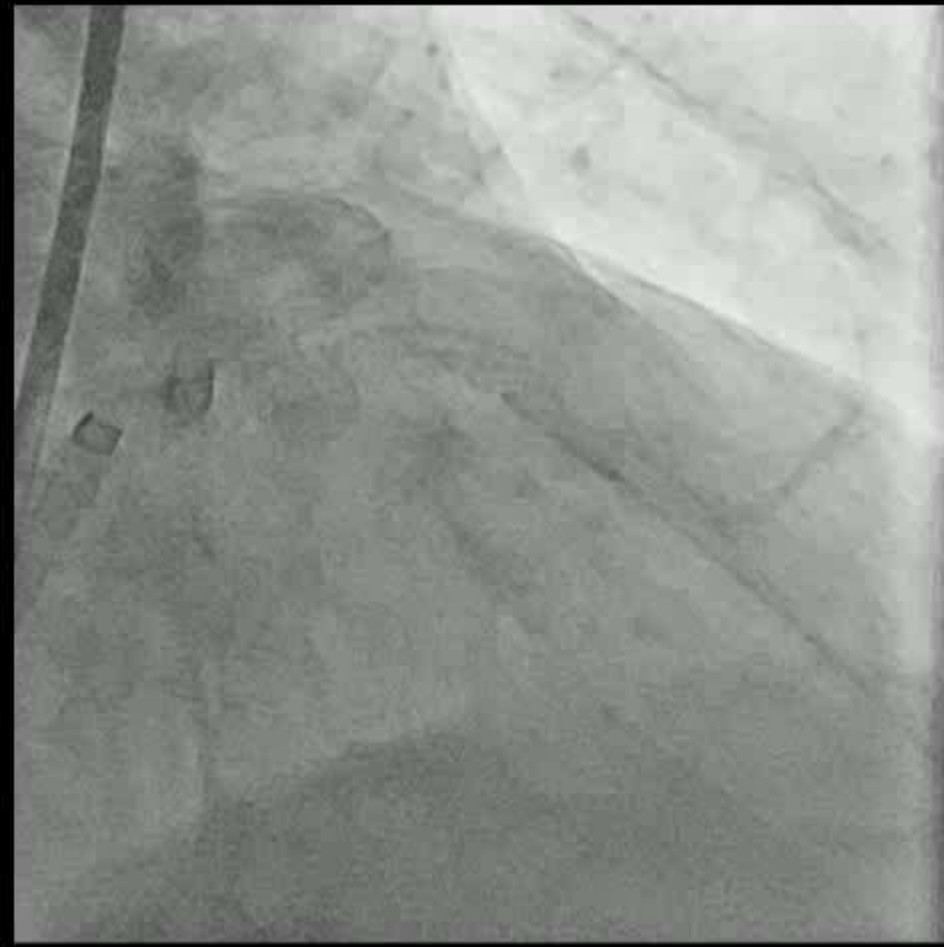


**SPIDER**

# Final angiography



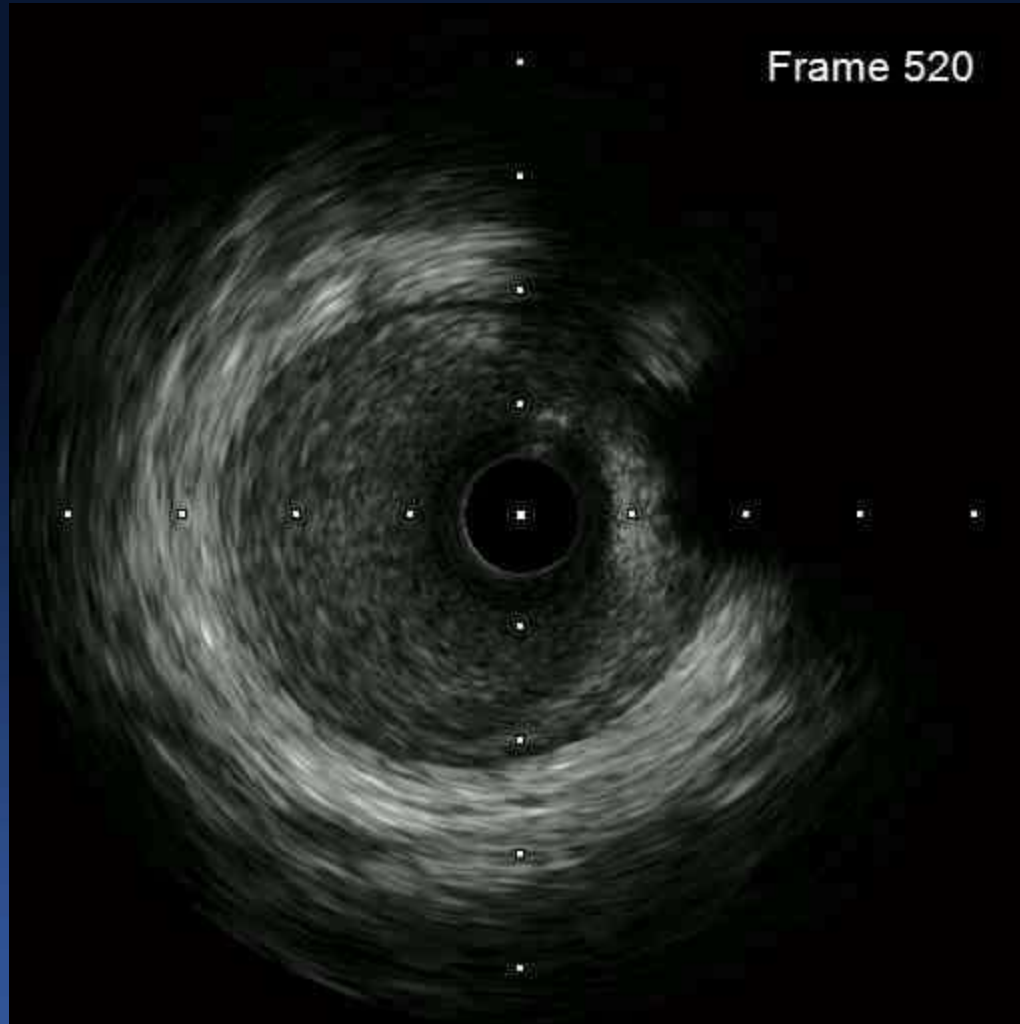
**AP CAUDAL**



**AP CRANIAL**

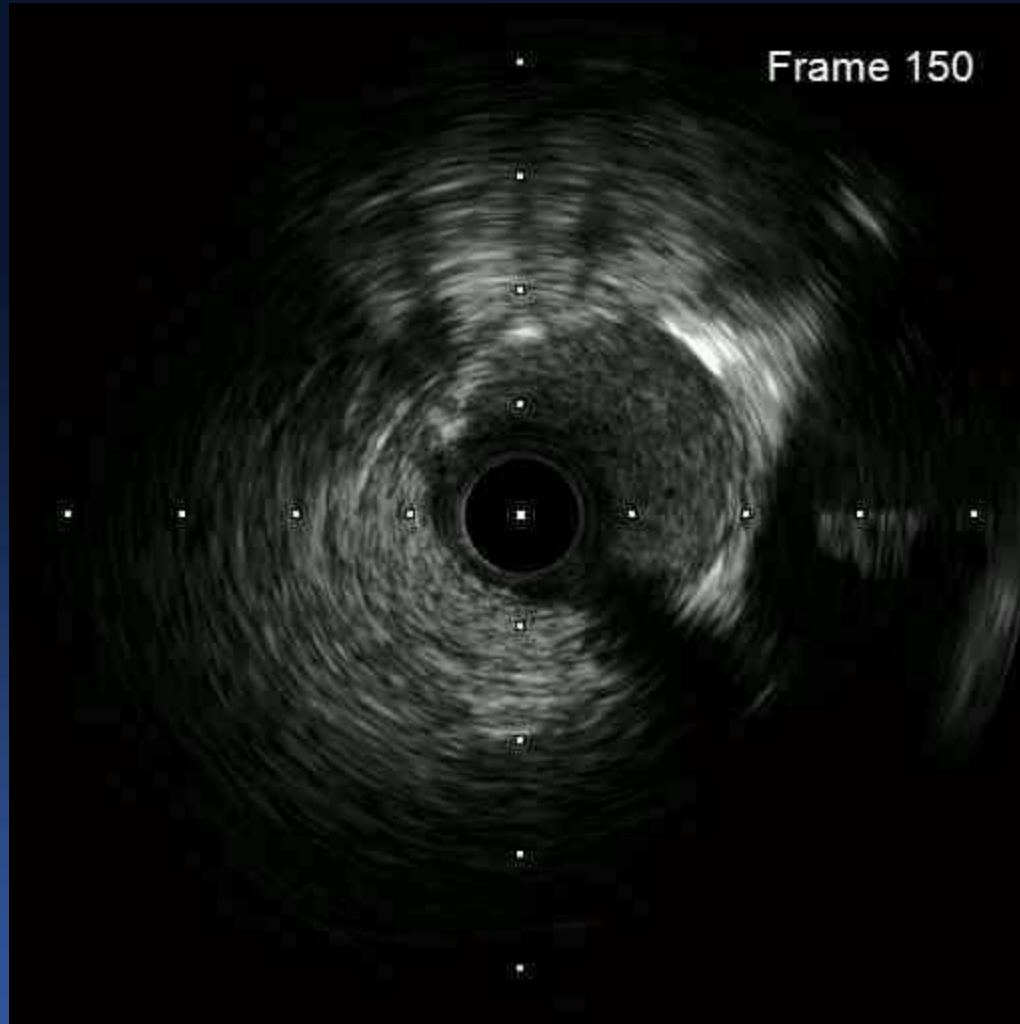
# IVUS

## Final LAD



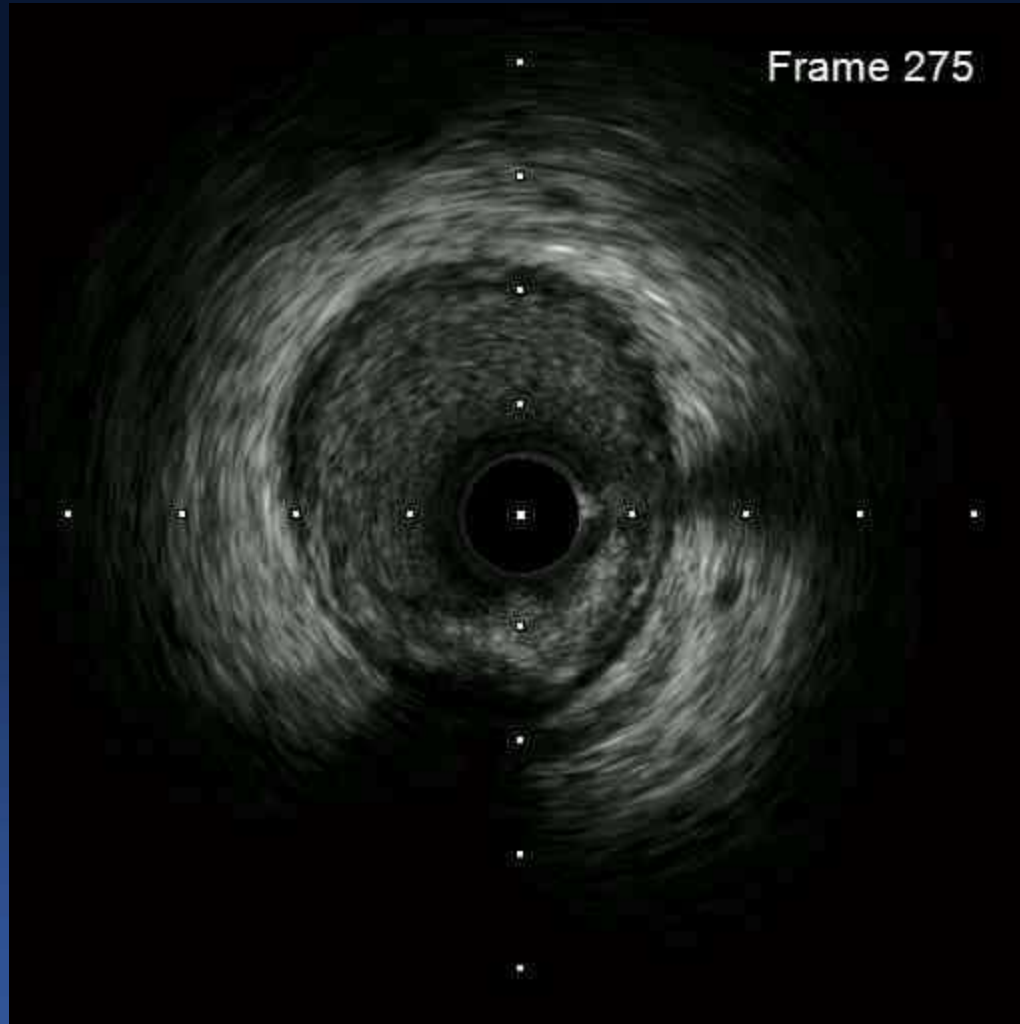
# IVUS

Final  
RI



# IVUS

## Final LCX



Thank you for your attention.